



Monitoring and Investigation of Protozoa

There are a number of diseases caused by protozoans, which can occur in Australia and are potentially waterborne. Protozoa can be a public health concern in aquatic and related environments, including drinking water, recreational waters and industrial environments such as cooling towers.

Diseases caused by Protozoa include severe cerebral and eye infections caused by amoebae (*Naegleria* and *Acanthamoeba* species) and gastroenteritis caused by enteric protozoans (*Cryptosporidium* and *Giardia* species).

All analytical methods are NATA accredited and subject to continuous quality improvement under our ISO 9001 certified quality management system.

AMOEBAE:

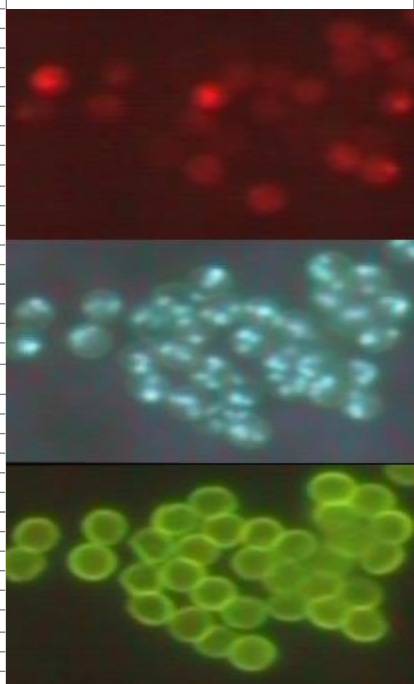
The Australian Water Quality Centre has been monitoring and advising on control of amoebae in water sources, supplies and bathing waters since 1979. The AWQC is the Australian reference laboratory for identification of amoebae, and has considerable expertise in assessing the effectiveness of water treatment processes against protozoa.

Services include -

- Monitoring of the occurrence and density of pathogenic amoebae in water supplies, recreational waters (including swimming pools) and sediments.
- Identification of cultured amoebae from other environmental and clinical laboratories by microscopy, real time PCR and isozyme electrophoresis.
- Investigation of amoebae in specialised environments such as eyewash stations and cooling towers.

CRYPTOSPORIDIUM and GIARDIA:

- Analysis of source water, drinking water, recreational water and wastewater for *Cryptosporidium* and *Giardia*.
- Advice on disinfection and prevention of contamination.
- Assessment of the effectiveness of water treatment chemicals and processes against protozoans.



CERTIFIED QUALITY
MANAGEMENT SYSTEM
ISO 9001



AUSTRALIAN WATER QUALITY CENTRE

250 Victoria Square
Adelaide SA 5000
Telephone 1300 653 366
Facsimile 1300 883 171
GPO Box 1751
Adelaide SA 5001
awqc@sawater.com.au
www.awqc.com.au

15 FEBRUARY 2009